

DATE:

PROJECT:

COMMENTS:

PARmate®
Outdoor Lighting Fixture



CONSTRUCTION

- Corrosion-free, high impact polycarbonate housing
- Silicone seal permits lamps to be positioned vertically
- EDPM cover plate gasket
- Porcelain medium screw base lamp holder
- Brass screws and inserts

LAMP

- PAR 38 and PAR 20 lamps (Lamp not included)
- 150W maximum

MOUNTING

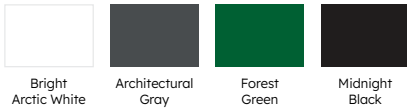
- Wall, ceiling, and ground

FINISH

- Bright arctic white
- Architectural gray
- Forest green
- Midnight black

APPROVALS

- DLC (Lamp dependent)
- ETL
- CSA Certified
- Made in the USA
- Indoor/outdoor
- Suitable for wet locations
- Materials meet UL 94-5V standards for flame retardant
- Marine grade.



ORDERING LOGIC

PARmate®-65-1-1-0

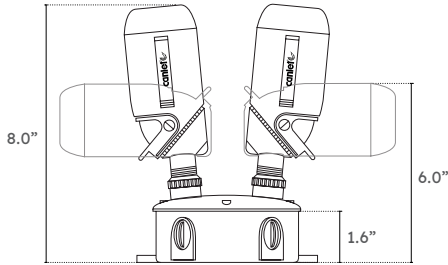
SERIES	LAMP HOLDERS	FINISH	WEATHERPROOF BOX	OPTIONS
PARmate®-65	1 One Lamp Holder	1 Bright Arctic White	0 No Box	20 PAR 20 Shroud
	2 Two Lamp Holders	2 Architectural Gray	1 Matching Weatherproof Box	38 PAR 38 Shroud
	3 Three Lamp Holders	3 Forest Green		MS Motion Sensor
		4 Midnight Black		GMS Ground Mount Stake
PARmat®-65				

INSTALLATION

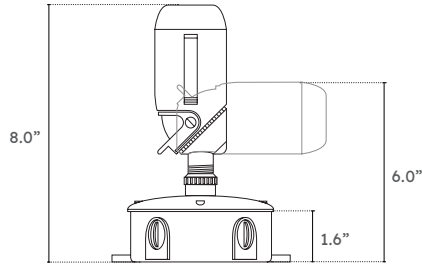
The ceiling box has 3/4" threaded hubs with liquid tight knockouts. Internal grounding system allows for hub to hub grounding continuity when using metallic wiring methods (lock nuts are required). Two mounting feet are spaced 5 1/4". Pendant mount fixtures have a single 3/4" threaded hub with a locking set screw. Use minimum 90°C rated lead wires.

DIMENSIONS

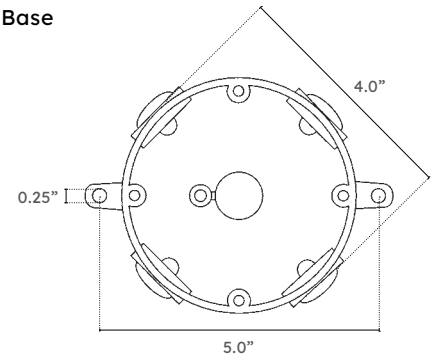
Front



Side



Base

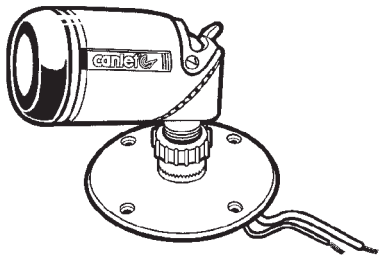


INSTALLATION

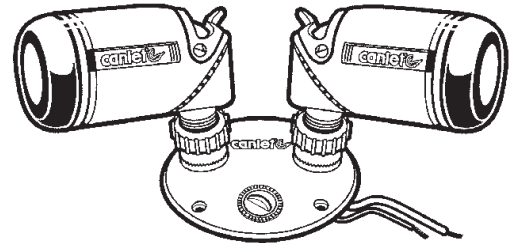
Both the single hole and three hole covers fit on all 4" weatherproof boxes, recessed 4" octagonal boxes and matching Canlet weatherproof boxes. Screw caps are provided to plug unused mounting holes. The matching weatherproof box has five 1/2" threaded hubs and four plugs. The rear hub is a knockout. The box's mounting feet are spaced 5". Each fixture comes with installation aiming instructions.

DRAWINGS

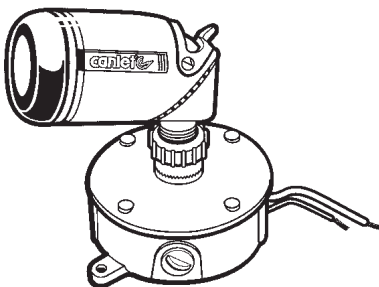
One Lamp Holder with Cover



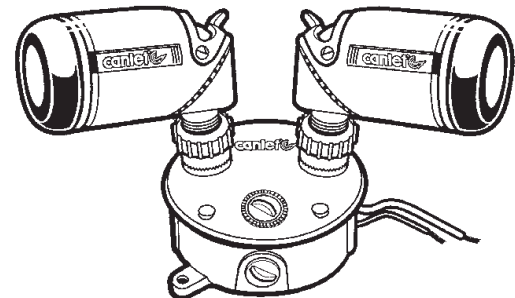
Two Lamp Holders with Cover



One Lamp Holder with Cover and Box



Two Lamp Holders with Cover and Box



INSTALLATION

The ceiling box has 3/4" threaded hubs with liquid tight knockouts. Internal grounding system allows for hub to hub grounding continuity when using metallic wiring methods (lock nuts are required). Two mounting feet are spaced 5 1/4". Pendant mount fixtures have a single 3/4" threaded hub with a locking set screw. Use minimum 90°C rated lead wires.